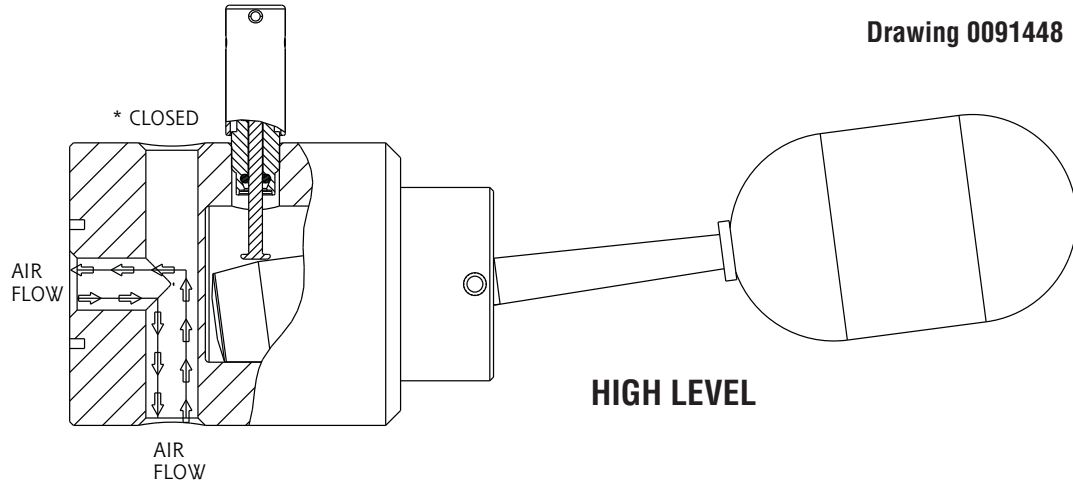


The following drawings show the manual check (MC or MD) option.

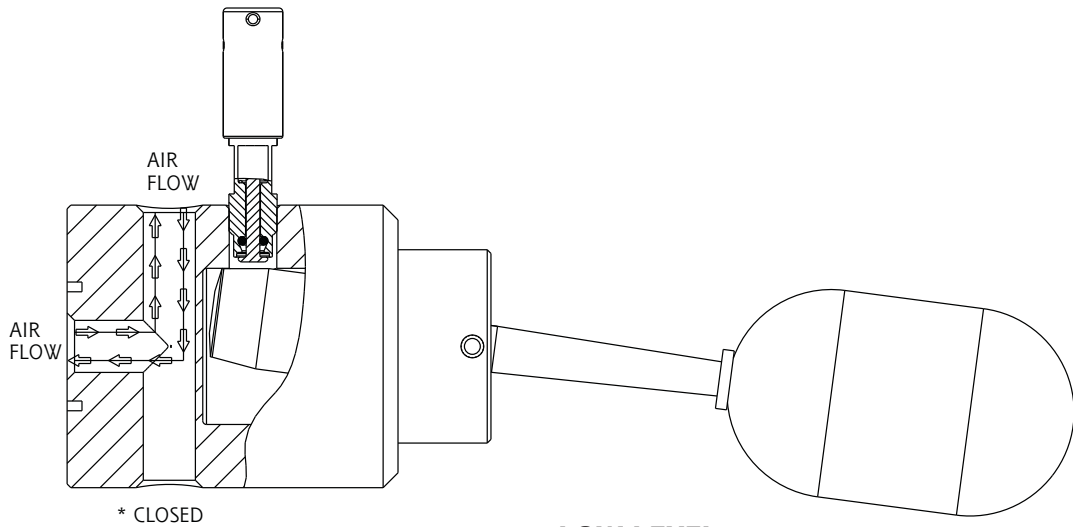
Linear = mm/inches

Drawing 0091448



HIGH LEVEL

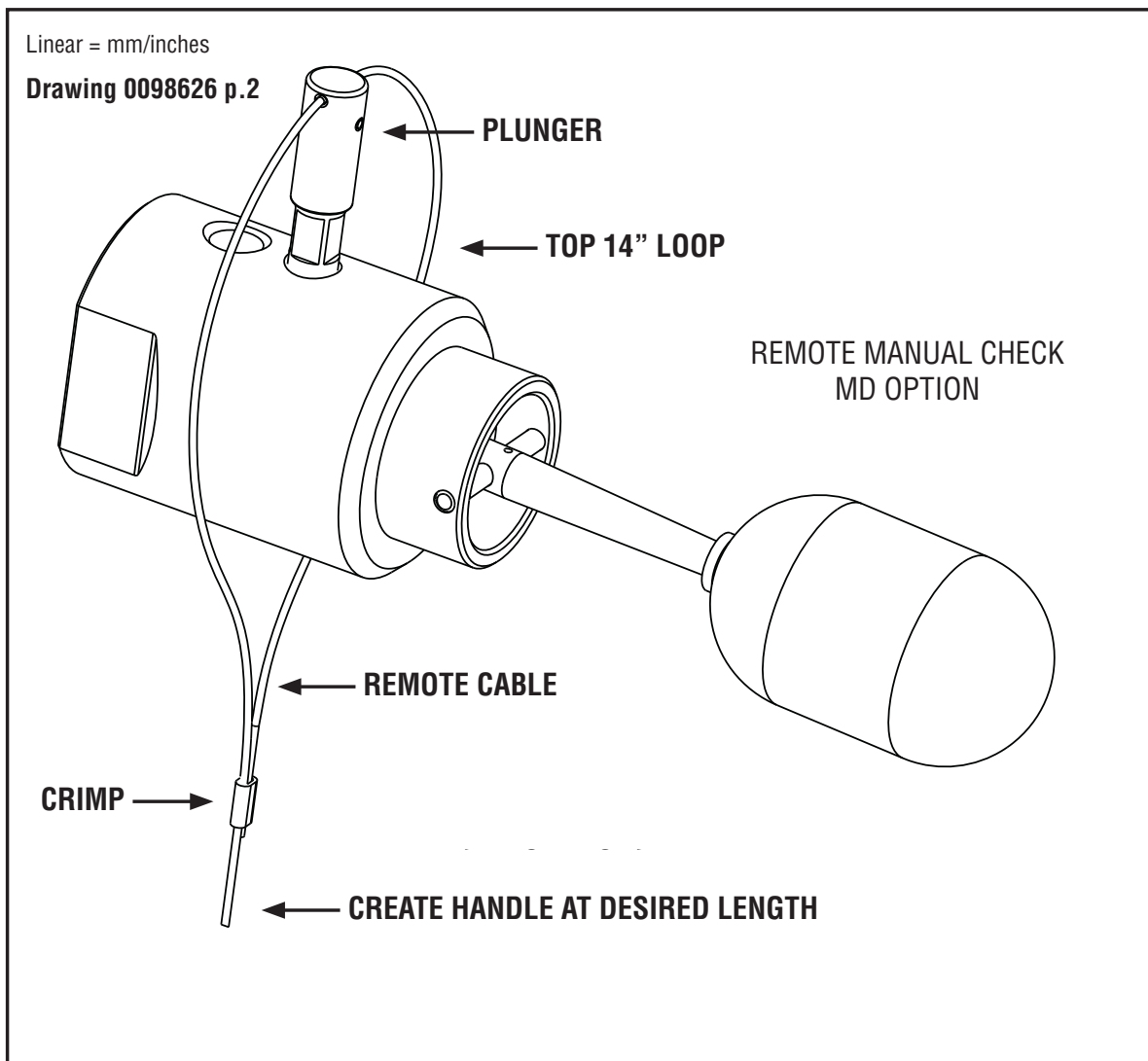
* DO NOT PLUG THIS PORT. DURING ACTUATION AND RESET, TRAPPED AIR IN THE SENSOR MUST ESCAPE FOR THE UNIT TO OPERATE PROPERLY.



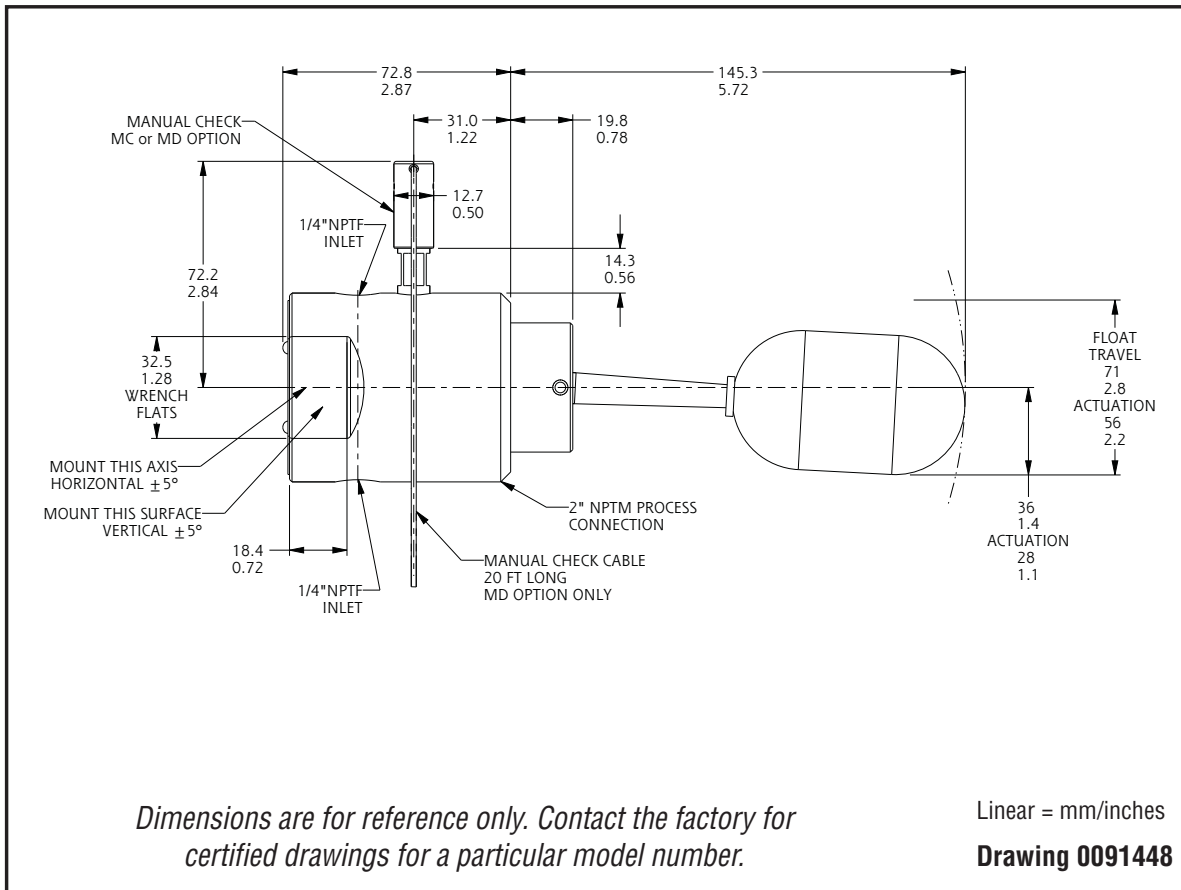
LOW LEVEL

Installation

- The unit may be mounted using the standard 2" NPT process connection.
- MD Remote Option (includes plunger, 20 foot cable and two crimps.)
 - Screw plunger to the top of unit.
 - Thread the 20' cable through the hole in plunger and create a 14 inch top loop as shown below.
 - At the bottom of the cable, a second loop can be created as a handle for actuation at the desired length.



Dimensions



Replacement Parts

Designator	Description
3130040	20' Remote Cable with two cable crimps*
3100152	Float
9227012	Float & Arm Assembly
9227024	Manual Check Accessory (uses Viton GLT O-ring) (MC)*
9227025	Manual Check Accessory with remote 20' cable (MD)*

* Unit must have originally been supplied with MC or MD option.



Printed in USA

sorinc.com

14685 West 105th Street, Lenexa, KS 66215 ■ 913-888-2630 ■ 800-676-6794 USA ■ Fax 913-888-0767